

rainbow™

# Digital Dentistry

**Dentium**  
For Dentists By Dentists



## rainbow™ Digital Dentistry

rainbow™ Digital Dentistry is a complete dental diagnostic system ranging from CAD/CAM equipment to Lab products. Dentium is committed to developing, manufacturing and offering a full series of products related to prosthetics for our customers. The system is compatible with other companies' software and equipment. Dentium is currently the only company developing and manufacturing the "all-in-one system" in the nation (South Korea). We expect to release a diverse range of Digital Dentistry as we continue to pave the way as the leader in the industry.

# Contents

## Digital Dentistry

- 05 rainbow™ CT
- 06 rainbow™ Scanner Prime
- 08 rainbow™ Mill - Metal
- 10 rainbow™ Mill - Clinic
- 12 rainbow™ Mill - Zr
- 14 rainbow™ Mill Bur List

## Lab Products

- 16 rainbow™ Shine - T
- 17 rainbow™ High Shine Block
  - rainbow™ Shade Block
  - rainbow™ Trans Block
  - rainbow™ Block
  - rainbow™ LS Block
  - rainbow™ LS Pressing
- 18 rainbow™ Porcelain
- 19 rainbow™ Coloring Liquid
  - rainbow™ Brushing Liquid
  - rainbow™ Paste Stain

# Dentium Global Milling Center



## Optimized for the implant products from Dentium

Better margin design and control  
A natural and better emergence profile  
Superior angulation

- Ti-based zirconia customized abutment
- Customized titanium Abutment
- Zirconia Crown (Full Zirconia and Build-up Crown)
- Surgical Guide
- Various restorations work



**Dentium**  
For Dentists By Dentists

**NEW  
PRODUCT**

# rainbow™ CT

- Provided CT, Pano and Cephalo for dental diagnosis
- Implementation of implant planning software
- Multiple panoramic scan arch
- High resolution and standard scan mode for CT
- Image data format compatible with DICOM 3.0
- Providing a large FOV (Normal: 16x10cm, Stitching: 16x18cm)



FOV size (cm)	5x5, 16x10, 16x18 (Stitching Mode)
Scan time	CBCT: 19s, Pano: 19s, Line Ceph: 19s, One-shot Ceph: 1s
CBCT sensor	CMOS sensor
Focal spot	0.5mm
Generator voltage	60 ~ 100 kVp
Generator current	4 ~ 12 mA
Reconstruction time	Less than 60s
Patient Position	Standing / Wheel chair accessible
Voxel size	300 μm (High 200 μm)



CT Scan



Panorama Scan

Cephalo Scan



Scan QR Code to  
You can see Video



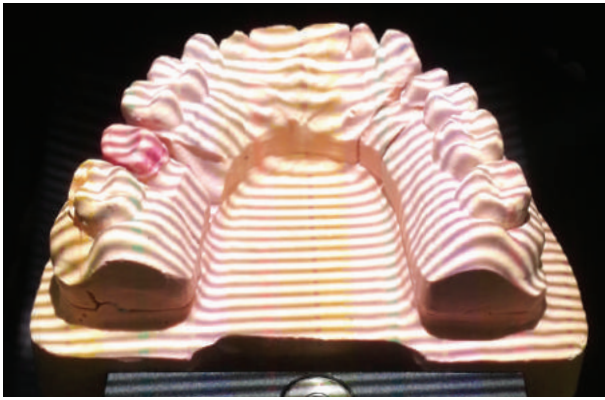
## rainbow™ Scanner Prime

- Structured light tech (Accuracy <math><10\mu\text{m}</math>)
- Wide scan area & Deep depth of scan field
- Convenient scan jig accessory
- 2MP camera resolution & USB 3.0 interface

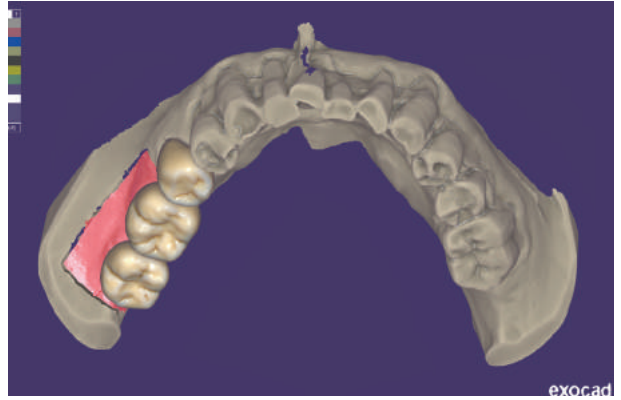
Scan type	White light technology
Camera resolution	2.0 Mega pixels (Twin-Camera)
Scan time	Single: 29 sec, 4-Bridge: 103 sec
Accuracy	$\leq 10\mu\text{m}$
Interface	USB 3.0
File format	Open STL
Scan area (W X D X H)	80 X 60 X 60 mm
Dimensions	28 X 40 X 45 cm
Weight	15 kg



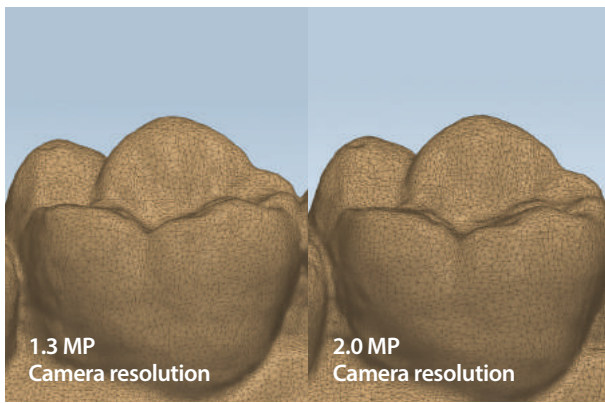
White light scanning



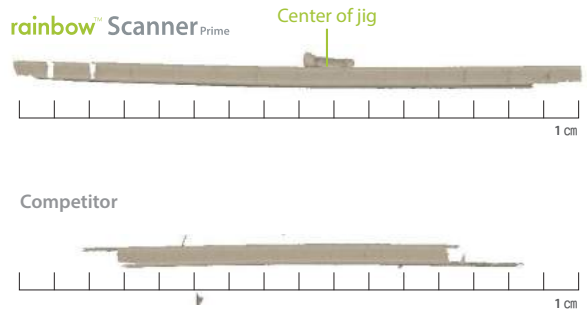
EXOCAD (CAD software)



2.0 MP Camera resolution



Wide scan area & Deep depth of scan field



rainbow™ Scanner offers precise and accurate scanning capability and reliable performance. The doorless entry accessibility makes the setting up of the scan-jig fast and easy. The open STL file format enables compatibility of various CAD software. Increased speed and highly accurate scanning of 3D data are possible due to the perfect synchronization between cameras and pattern projection device, and data processing technology. Dentium's diverse implant system library, as well as other implant systems' library provides convenience of prosthetic design.



Scan QR Code to  
You can see Video



## rainbow™ Mill - Metal

Material	Titanium, PMMA, Glass ceramic, Wax
Control axis	4 Axis
Spindle	50,000rpm / 0.45kw
Motion drives	All servo motors
Tool Posts	8 Posts (Automatic tool change)
Ti Blank holder	10
Milling type	Wet processing
Dimensions	51 x 71 x 64 cm
Weight	150kg

- Optimized for titanium abutment milling
- High speed and steady quality in milling
- Multi NC data loading system
- Stable water cooling control system
- Easy control and user friendly interface



Black



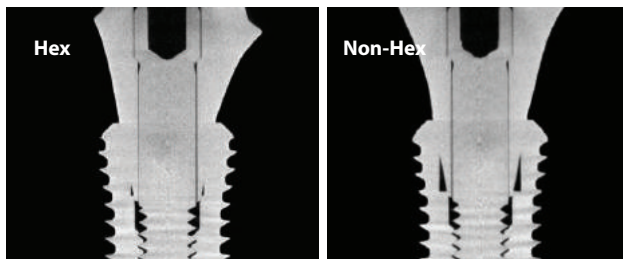
White



Optimized for implant products from Dentium



Dentium Ti Blank



Cross section of Dentium customized titanium abutment & SuperLine FX4510W

Optimized for Glass ceramic, Zirconia, PMMA



Link type



Link-Less type



Bar type



Disc type



Ti-blank



Ti-blank

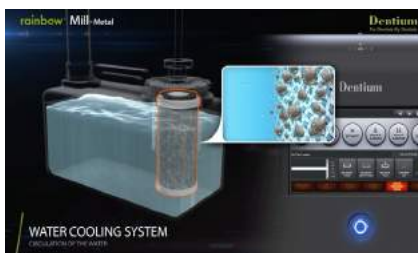


Glass Ceramic



PMMA, WAX

Water-cooling system



MNLS (Multi NC data load system)



hyperDENT (CAM Software)



rainbow™ Mill-Metal is a 4-axis, wet processing machine optimized for titanium abutment. It provides jigs for processing of various materials. In the case of abutment processing, you can increase the process efficiency by using the link-less jig. Intuitive and easy to use with a simple GUI with convenient functions.



Scan QR Code to  
You can see Video



## rainbow™ Mill - Clinic

- Optimized for glass ceramic milling by stable water-cooling control system
- Simultaneous 5-axis milling system optimized for variety of designs
- High speed and steady quality in milling
- Tool load and broken detection system
- Multi NC data loading system
- Easy control and User-friendly interface
- Simple and elegant design for dental clinic

Material	Glass ceramic, Zirconia, PMMA, Wax
Control axis	Simultaneous 5-axis
Spindle	60,000 rpm, 250W
Motion drives	All servo motors
Tool posts	7 posts (Automatic tool change)
Milling type	Wet processing
Dimensions	45 x 71 x 71 cm
Weight	100 kg



Optimized for Glass ceramic, Zirconia, PMMA



Glass ceramic



Zirconia



PMMA

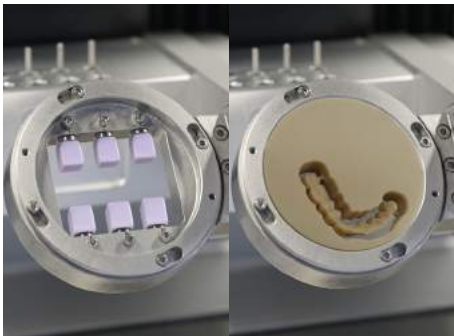
Water-cooling system



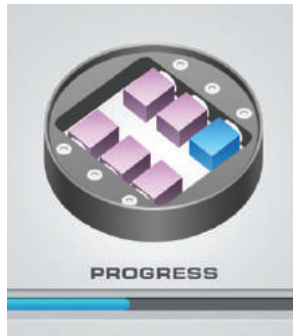
Double layered filter, grinding oil insufficiency and filter replacement alarm



Bar & disk type block can be applied



MNLS function applied (Multi NC data loading system)



7 Tool posts (Automatic change)



High-precision spindle



User friendly touch interface



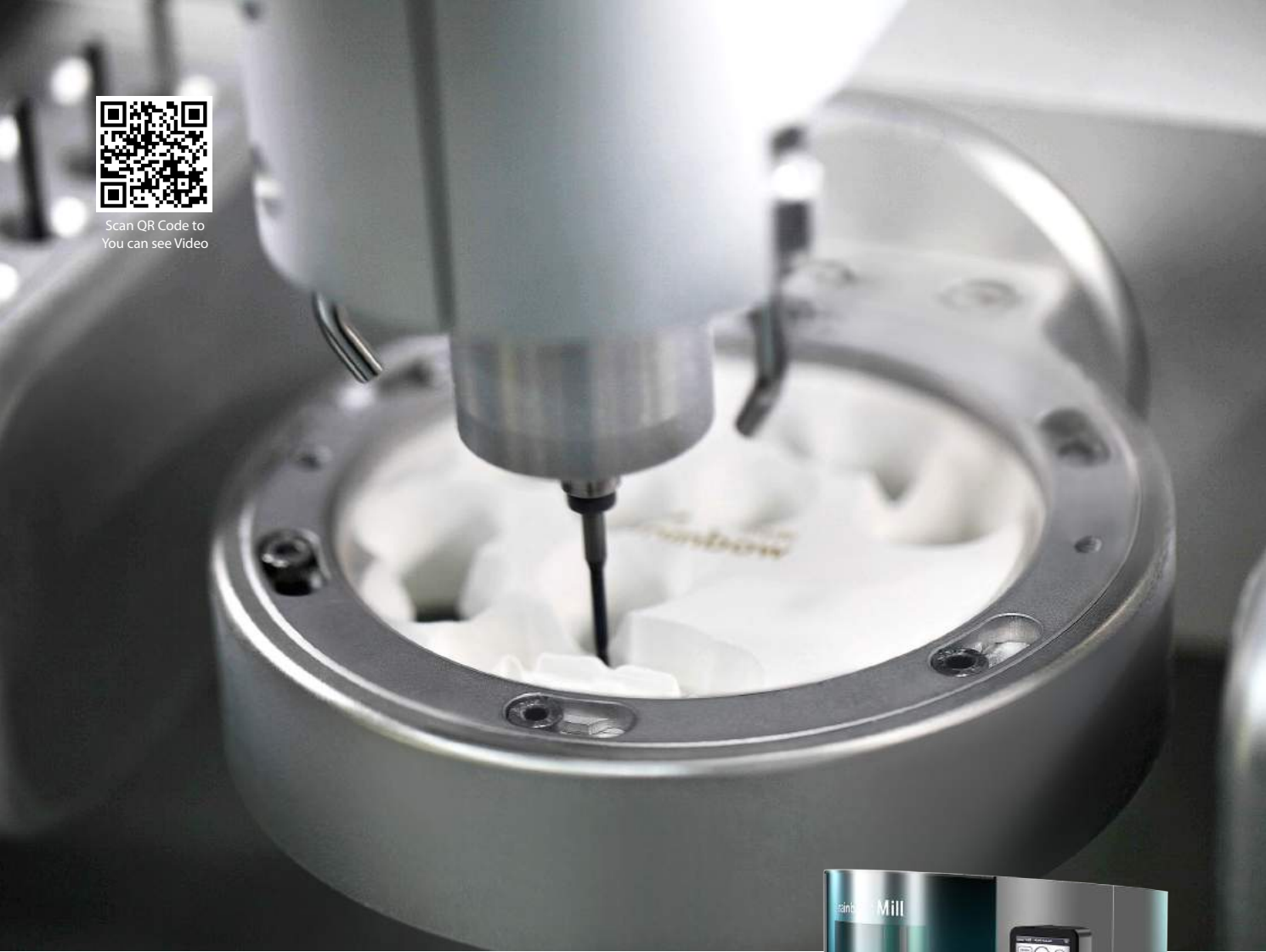
hyperDENT (CAM Software)



rainbow™ Mill - Clinic is a 5-axis, wet processing machine optimized for glass ceramic. Clinic It provides a compact design optimized for the environment and a jig for processing various materials. Intuitive and easy to use with a simple GUI with convenient functions.



Scan QR Code to  
You can see Video



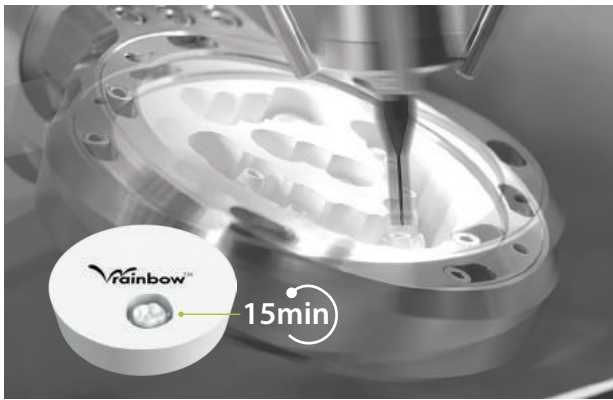
## rainbow™ Mill - Zr

- Diverse design and precise production with simultaneous 5-axis milling system
- Equipped with a spindle, allowing highly precise and fine machining
- Enhanced convenience with user-focused interface
- Provides space-efficient by integrated design dust collector

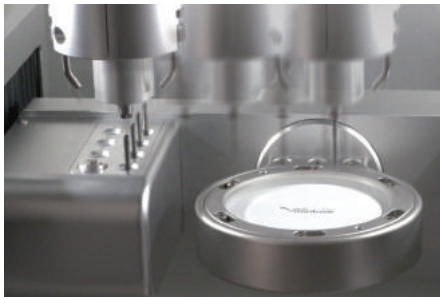


Material	Zirconia, PMMA, Wax
Milling time	Single : 15 Min, 3Br : 45 Min
Control axis	Simultaneous 5-axis
Spindle	60,000 rpm, 250W
Motion drives	All servo motors
Tool posts	7 posts (Automatic changes)
Milling type	Dry processing
Dimensions (W x D x H)	71 x 81 x 170 cm
Weight	280 kg

Fast milling speed & Stable milling quality



Automatic tool change & Broken tool detection system



User friendly touch interface



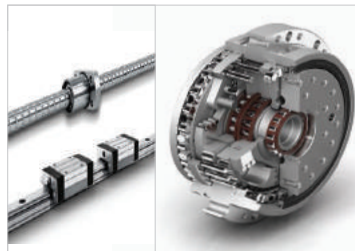
Built-in dust collector



High-precision spindle



High precision & stiffness parts for maximum durability












hyperDENT (CAM Software)



rainbow™ Mill-Zr is a 5-axis, dry-type machine optimized for zirconia. Various types of jigs are available to use disc(with step) blocks of various thicknesses. Intuitive and easy to use with a simple GUI with convenient functions.


# rainbow™ Mill Bur List

rainbow™ Mill - Zr & Clinic

Design	Art. No.	Type	Shank diameter	Diameter	Material
	BE3D2-D	ENDMILL	Ø 3	Ø 2	ZIRCONIA
	BE3D1-D	ENDMILL	Ø 3	Ø 1	ZIRCONIA
	BE3D0.5-D	ENDMILL	Ø 3	Ø 0.5	ZIRCONIA
	BE3D2-N	ENDMILL	Ø 3	Ø 2	PMMA / WAX
	BE3D1-N	ENDMILL	Ø 3	Ø 1	PMMA / WAX
	FE3D2-N	FLAT ENDMILL	Ø 3	Ø 2	CALIBRATION
	GT3D2-ED	GRINDING	Ø 3	Ø 2	GLASS CERAMIC / COMPOSITE RESIN
	GT3D1-ED	GRINDING	Ø 3	Ø 1	GLASS CERAMIC / COMPOSITE RESIN
	GT3D0.6-ED	GRINDING	Ø 3	Ø 0.6	GLASS CERAMIC / COMPOSITE RESIN

# rainbow™ Mill Bur List

## rainbow™ Mill - Metal

Design	Art. No.	Type	Shank diameter	Diameter	Material
	BE6D3-T	ENDMILL	Ø 6	Ø 3	TITANIUM
	BE6D2-T	ENDMILL	Ø 6	Ø 2	TITANIUM
	BE6D1.5-T	ENDMILL	Ø 6	Ø 1.5	TITANIUM
	BE6D2-N	ENDMILL	Ø 6	Ø 2	PMMA / WAX
	BE6D1-N	ENDMILL	Ø 6	Ø 1	PMMA / WAX
	GT6D2-ED	GRINDING	Ø 6	Ø 2	GLASS CERAMIC / COMPOSITE RESIN
	GT6D1-ED	GRINDING	Ø 6	Ø 1	GLASS CERAMIC / COMPOSITE RESIN
	GT6D0.6-ED	GRINDING	Ø 6	Ø 0.6	GLASS CERAMIC / COMPOSITE RESIN

# rainbow™ Shine-T

**Zirconia block with superb aesthetics and high flexural strength.**

- Simultaneously securing transparency and strength similar to natural teeth
- Transparency rate (~45%, A0) enables aesthetic prosthetics on the anterior site

**A0 A2 Shade**

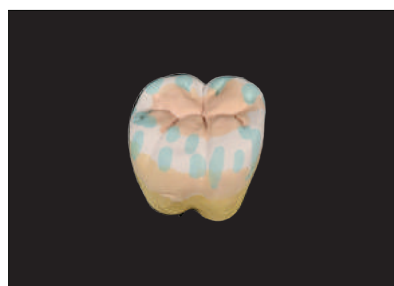


## Indication

● recommend ○ Possible

	Single Crown		Bridge(3-unit-Bridge)		Bridge (≥ 4-unit Bridge)
	Anterior Crown	Posterior Crown	Anterior Bridge	Posterior Bridge	
Shine-T	●	●	●	●	○
Trans/Shade	○	●	○	●	●

### Case 1.



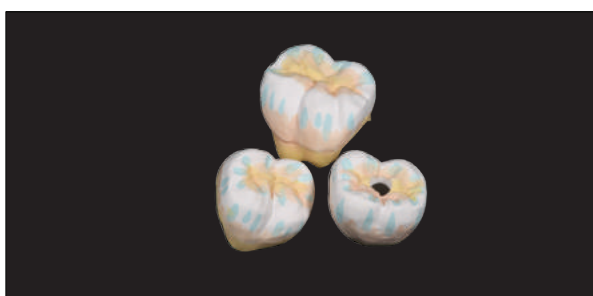
Brushing



Final Prosthesis



### Case 2.



Brushing



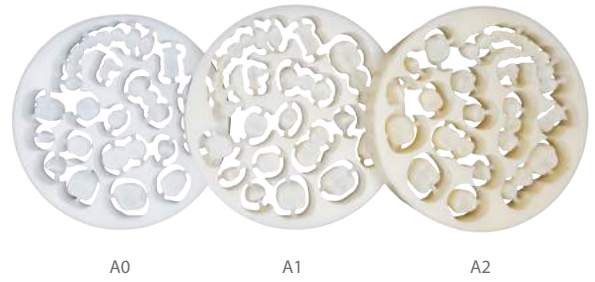
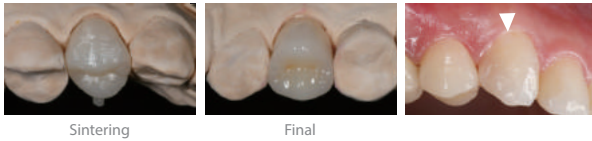
Final Prosthesis





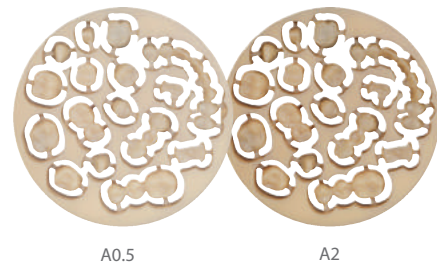
## rainbow™ High Shine Block

- Clearer and more transparent than the traditional opaque and translucent blocks
- Higher in strength than the Lithium Disilicate product group
- Product available in shades A0, A1 and A2 for best esthetic result



## rainbow™ Shade Block

- Original color of the blocks eliminates the need for additional dipping
- Uniform color tone is preserved even after occlusal articulation
- Entire "Vita A" shades are expressible with simplified constitution of A0.5 and A2 blocks



## rainbow™ Trans Block

- Enhanced durability through increased fracture resistance
- Precise marginal fit due to the uniform shrinkage (x, y, z axis)
- More economically beneficial compared to gold or other translucent blocks



## rainbow™ Block

- Precise marginal fit through the uniform shrinkage (20% shrinkage - x, y, z axis)
- Composed of Zirconia material similar in appearance to a natural tooth
- High flexural strength
- Fracture resistance



## rainbow™ LS Block

Lithium disilicate block with superior esthetics

- Excellent transparency and 9 shades (A1, A2, A3, A3.5, A4, B1, B2, B3, B4)
- High flexural strength (370MPa)
- Various indications (Veneer, Inlay, Onlay, Single crown and so on)
- Compatible disk-type block for milling machine



## rainbow™ LS Pressing

Lithium disilicate ingot for pressing technique

- Excellent esthetic results and high strength
- Various indications (Veneer, Inlay, Onlay, Single crown)
- Capable of precise marginal fit





# rainbow™ Lab products

## rainbow™ Porcelain

- Harmonized coefficient of thermal expansion with Zirconia minimizes the possibility of cracking
- Can express a huge diversity of color shade while delivering an excellent esthetic due to the superb Opalescent and Fluorescent effect
- Natural-looking prosthesis production is possible with such a simple build-up procedure
- The special treatment to the powder creates high viscosity even when mixed with just distilled water, offering high user convenience

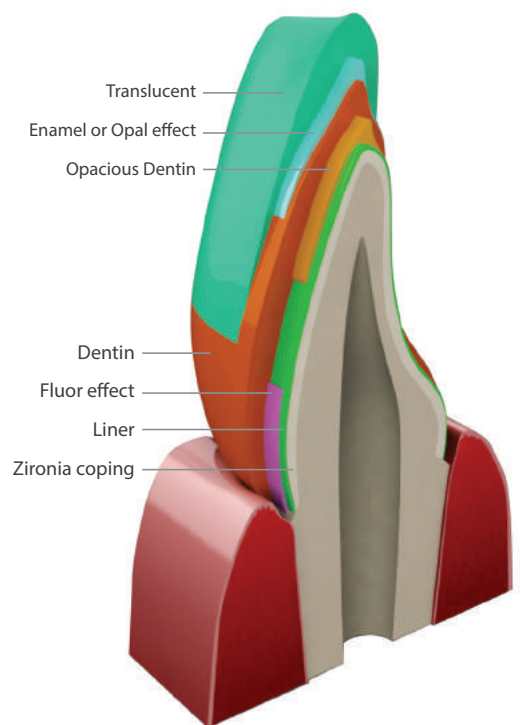
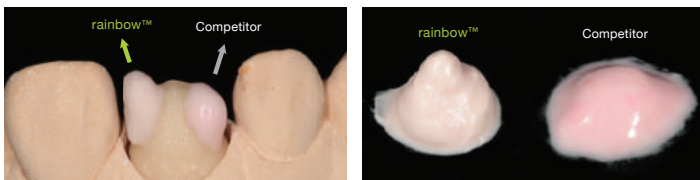
### Opal Effect



### Fluor Effect

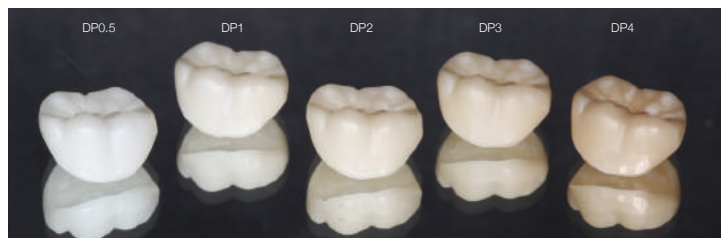


### Excellent Workability



# rainbow™ Coloring Liquid

- Coloring liquid for Zirconia prosthesis
- Comprised of the five most commonly used dipping colors
- Deep color penetration to express a natural esthetic

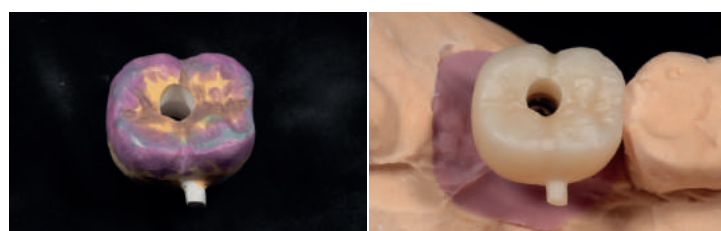


# rainbow™ Brushing Liquid

- Fine detailing by implementing the brushing technique
- Solution Type and Pen Type are available to accommodate user's preference
- Comprised of 11 colors to enhance the esthetics of the prosthesis and a diluting solution to adjust the color intensity
- Brushed area is easily distinguishable through the incorporated food dyes



Solution Type



Before

After



Pen Type

# rainbow™ Paste Stain

Enhanced uniform application and ease of use

- The paste-like consistency of the product allows for ease of use and makes uniform application possible
- The sintering temperature requirement is lowered to under 800°C to allow application on diverse materials including Zirconia and Lithium Disilicate
- Available in 16 most commonly used shades



Coping

Glazing

Firing

Finish



Coping

Glazing & Firing

Finish

rainbow™  
**Digital Dentistry**

**Dentium**  
For Dentists By Dentists

Specifications are subject to change without notice.  
Some products listed in this catalog are not available in the market due to pending approval.

---

**HEAD OFFICE**

7F, 21, Teheran-ro 87-gil, Gangnam-gu, Seoul, Korea

**Tel** +82-2-555-3750 **FAX** +82-2-501-9560 **E-mail** biz@dentium.com / www.dentium.co.kr

RDDL-1804 [Rev.5]